



**HSRC**  
Human Sciences  
Research Council



# The Urban Nexus: People and Data in the Centre

**Crain Soudien** | eThekweni Research Symposium 2019

6 June 2019



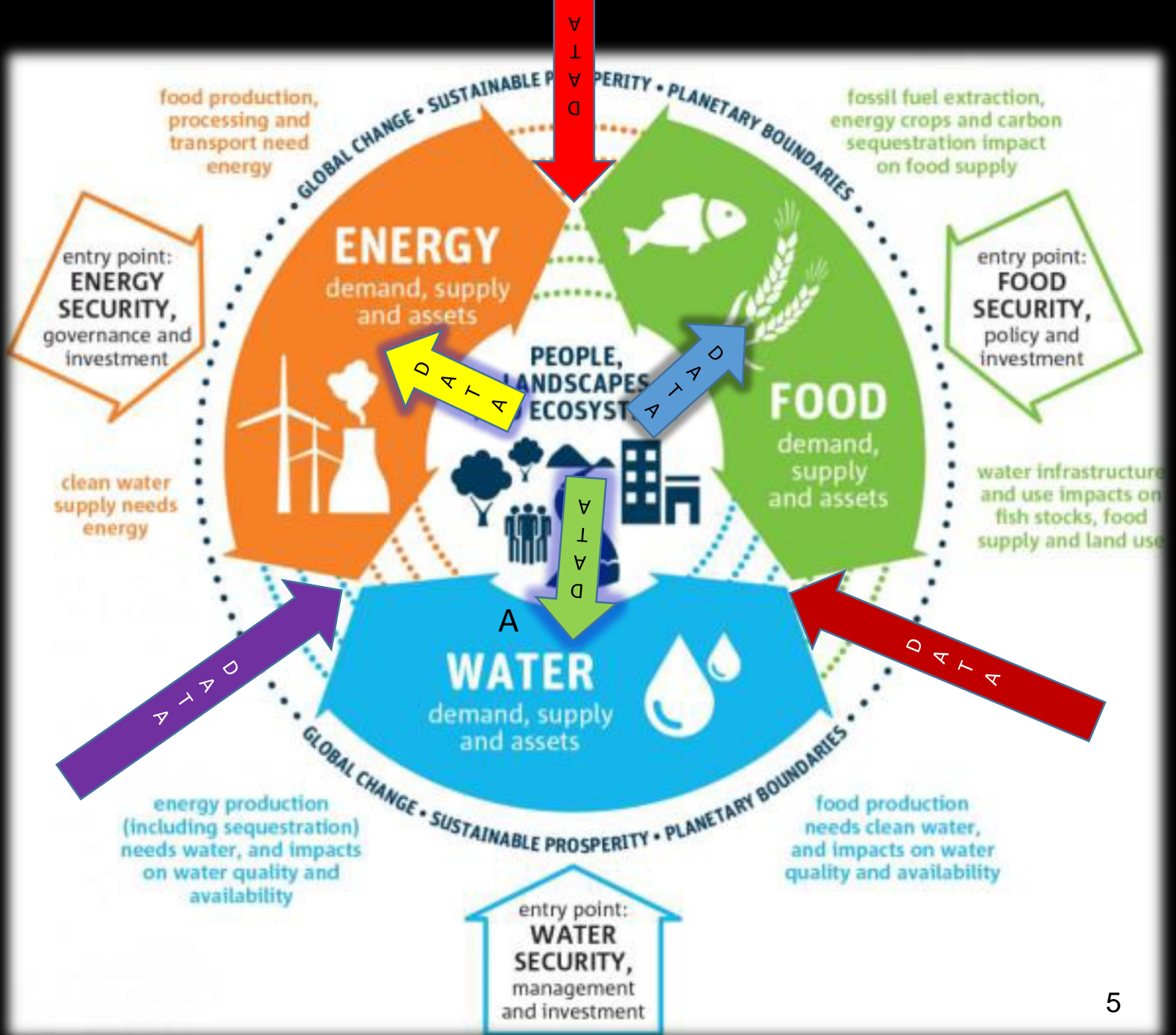
Urban nexus model requires a focus on  
**people and data**

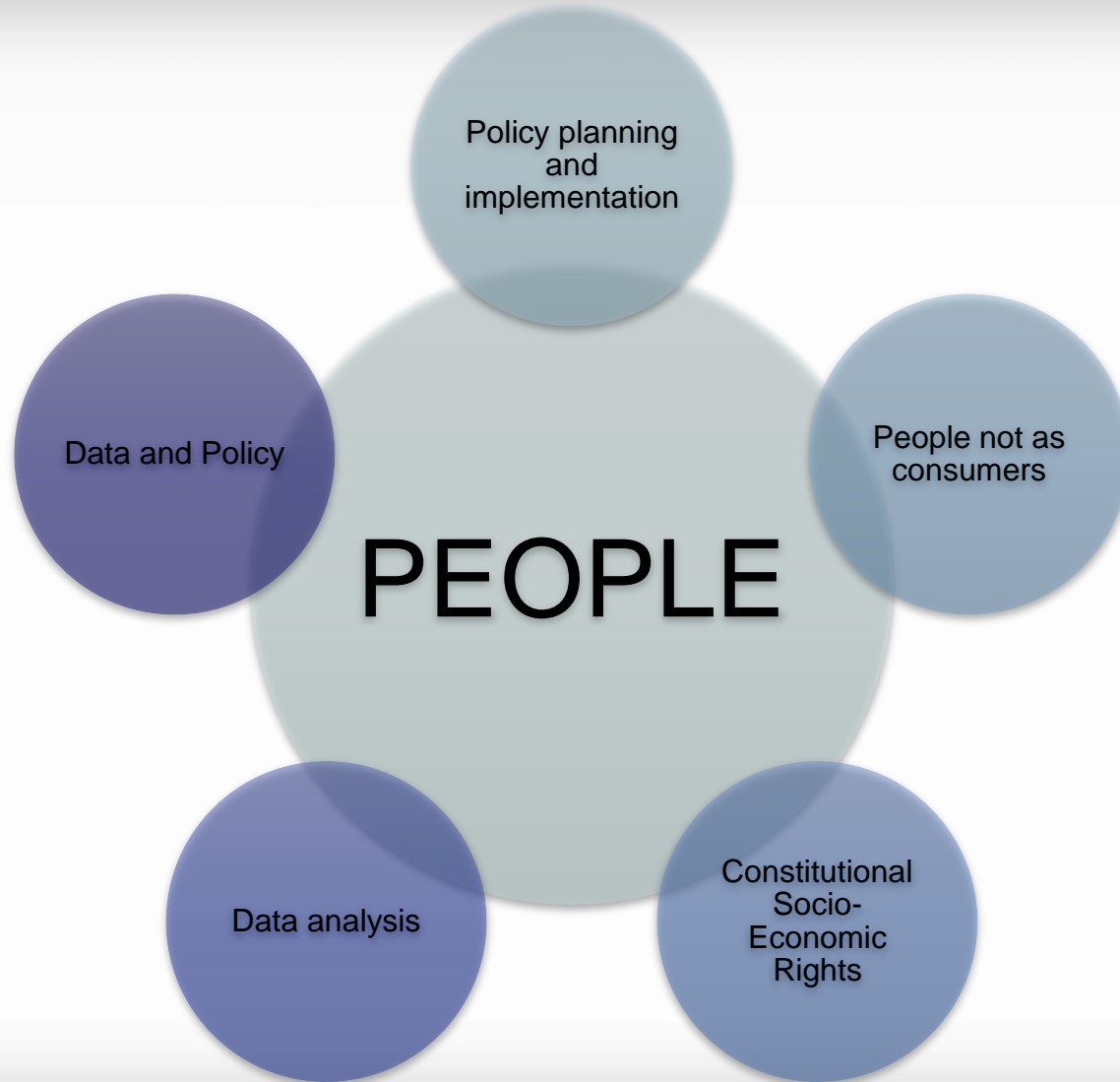


“

The nexus perspective is solutions-orientated and aims to avoid the pitfalls of governing resources in silo. Attempting to solve a problem in one domain can cause a problem in another. It contends that lack of proper analysis may lead to negative trade-offs impacting policy and technological choices, if not misguided policies. Therefore, the nexus approach seeks to understand risks, engage decision-makers, and enable action. It asks what are the different pathways that lead to resource security, sustainable development and green growth. Another dominant interpretation of the nexus stresses knowledge integration, efficiency, synergy and ‘win-win’ solutions.

# The eThekwini concept







# Pooling and integrating data sets

The possibilities



# IKHAYA LAMI:

## UNDERSTANDING HOMELESSNESS IN DURBAN

*Be counted. Be a part of improving the understanding of homelessness in your city*

A mixed methods participatory action research (PAR) study to explore the plight of the street-and shelter living community in central Durban, South Africa, 2015-16

Joint HSRC, eThekweni Municipality effort





# Three phase mixed methods study

## Phase 1: Formative phase

relationship building

- Consultation Process

- Qualitative Data Collection

## Phase 2: Homeless ness census

Census

Stakeholders involvement

FGDs and census questionnaire co-developed with stakeholders

## Phase 3: workshops/ roundtable policy discussions

Feedback roundtables

policy recommendations

# Improving Service Delivery and Community Engagement in Nyanga



# Scorecard methods



# Advantages of pooling/ integration



1

Detailed and  
nuanced data sets



Better able to validate results



Accurate  
planning



Comparative  
analysis



Effective  
application



2

Harmonisation and  
benchmarking

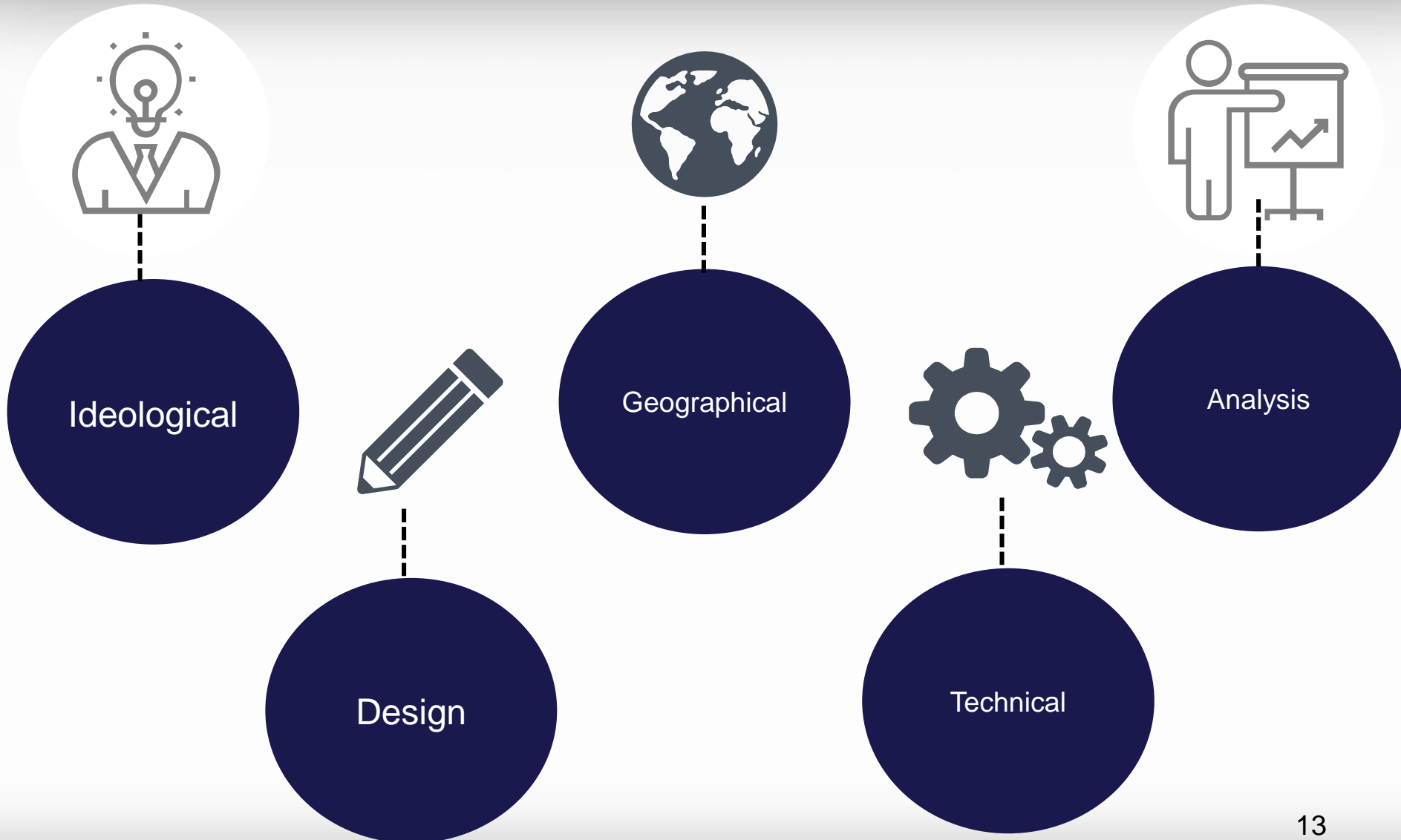


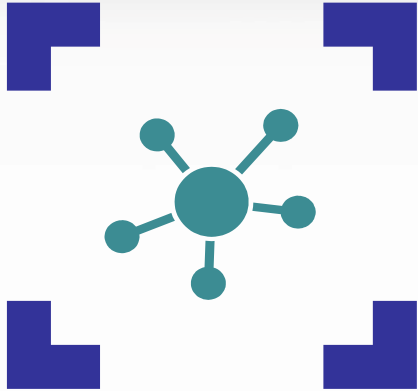
Determine minimum standards  
and building legitimacy



Realise socio-  
economic rights

# Key issues in relation to data pooling





**eThekweni Metro**  
Annual surveys on  
public perceptions

**HSRC**  
HSRC data on  
public perception

**KZN Premier**  
KZN Citizen  
Satisfaction Survey

**University partners**

**Durban Chamber  
of Commerce**

“

In South Africa, the large metropolises – Johannesburg, Cape Town and Durban – have seen the development of innovation clusters – particularly of start-ups on the part of (predominantly) young entrepreneurs. Drawing from these experiences of other cities globally, the engagement of cities in policies and programmes to spur local innovation will be investigated.

Suggestions from the Decadal Plan for Science, Technology and Innovation 2019-2029, currently being developed

